

## Jewellery, Watches, Coins & Silver, 22nd Jun, 2026 18:00

- 1 A diamond ring, set with an old European cut diamond of approximately 0.27cts, to an illusion setting in white metal, with tapered chenier shoulders and a yellow metal band, surface testing as 9ct, size P, 2.3 grams.  
Please note: Unless otherwise stated, lots have been tested using an electronic tester. This is a surface test only and is not a guarantee of metal purity. **£150-250**



- 2 A three-stone gem-set ring, centred with a round synthetic ruby, flanked by two synthetic white sapphires, to a bi-colour metal mount, stamped '18ct', size O1/2; 3.0 grams **£150-250**



- 3 A Victorian paste stick pin, of floral cluster design, set with colourless pastes, unmarked, the pin surface testing as 9ct, the paste mounting as silver, weight 1.9 grams, with fitted case.  
Please note: Unless otherwise stated, lots have been tested using an electronic tester. This is a surface test only and is not a guarantee of metal purity. **£80-120**



- 4 A group of jewellery; to include a 9ct wedding band size M 1/2, 3.9g; a paste-set lavalier pendant, surface testing as 9ct, 1.5g; a signet ring in pink metal testing as 14ct, size R 3.4g; a pair of plated cufflinks and a Victorian brooch (pin deficient) stamped "10C" but testing as base metal.  
Please note: Unless otherwise stated, lots have been tested using an electronic tester. This is a surface test only and is not a guarantee of metal purity. **£150-250**



- 5 Three rings, to include; a diamond three stone ring, stamped 18ct, ring size Q; a diamond carved half hoop five stone ring, stamped 18ct, ring size Q, total weight of 18ct 5.1 grams, with another diamond three stone ring, stamped PLAT and 9ct, ring size R, weight 2.3 grams. **£300-500**



## Jewellery, Watches, Coins & Silver, 22nd Jun, 2026 18:00

- 6 A diamond solitaire ring, featuring a round brilliant-cut diamond of estimated 0.30ct, to a four-claw setting and flanked by shoulders each channel-set with five round brilliant-cut diamonds, accompanied by an IGI Identification report which states the central diamond to be 0.30ct, G colour and I1 clarity, to an 18ct white gold ring shank, ring size N, 3.2 grams. **£200-300**



- 7 A 22ct yellow gold wedding band, size L, with British hallmarks for 22ct gold, 2.8 grams. **£200-300**



- 8 A sapphire and diamond pendant and chain, the pendant stamped '375', the chain a flat curb link, stamped '9K', weight 3.4 grams. **£250-350**



- 9 A 9ct gold smokey quartz and pearl brooch, of Edwardian-inspired design, with a large oval faceted smokey quartz, claw set, surrounded by half pearls (one deficient), also claw set, with a pin and hook fitting to the reverse, bearing UK hallmarks for London and 9ct gold, weight 6.5 grams. **£100-200**



- 10 A plain 22ct gold band ring, ring size R, hallmarked 22ct, weight 5.5 grams. **£300-500**



## Jewellery, Watches, Coins & Silver, 22nd Jun, 2026 18:00

- 11 A diamond-set three-stone ring, claw-set with three round brilliant cut diamonds, in a bi-colour gold mount, hallmarked 18ct gold, size L1/2; 2.8 grams **£300-500**



- 12 A 9ct Albert chain, of graduated curb links, with a bolt clasp and a swivel clasp, suspending a T-bar, each link stamped '9, 375', the T-bar marked '9, 375' with Birmingham assay mark and makers mark J.M, length approximately 40.0cm, weight 29.4 grams. **£800-1,200**



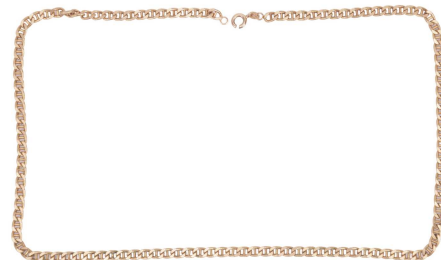
- 13 A shield signet ring, with worn initial engraving to front, in unmarked yellow metal, surface testing as 18ct, ring size R, weight 6.4 grams.  
Please note: Unless otherwise stated, lots have been tested using an electronic tester. This is a surface test only and is not a guarantee of metal purity. **£300-500**



- 14 An 18ct gold signet ring, consisting of a shield head with tapered shoulders leading to court shape shank, split at the back, hallmarked Birmingham 1919; 6.1 grams **£300-500**



- 15 An anchor link chain in 9ct yellow gold, completed with a spring-ring clasp, British import marks, 50.0 cm in length, 16.4 grams. **£650-800**



## Jewellery, Watches, Coins & Silver, 22nd Jun, 2026 18:00

- 16 Two 9ct gold sapphire rings, the first a sapphire and diamond cluster ring, ring size Q, the other a sapphire and cubic zirconia seven stone ring, ring size R, total weight 7.4 grams. **£200-300**



- 17 A crucifix pendant on chain, the pendant with loop bail measures 5.5 cm in length, suspending on a 45.0 cm long chunky box link chain, both struck with British hallmarks for 9ct gold, 30.8 grams. **£900-1,200**



- 18 A twisted rope link bracelet in 9ct yellow gold, fastened with a spring-ring clasp, British import marks, 20.5 cm long, 4.7 grams. **£140-180**



- 19 A pair of cufflinks in 15ct yellow gold, each consisting of domed ovals with floral engravings, connected with a figure-of-eight link, British assay marks, 4.6 grams. **£200-300**



- 20 Three rings, comprising a sapphire and diamond-set cluster ring, in a 9ct gold mount, size K, a channel-set emerald half eternity ring, in 9ct gold, size S, and a synthetic sapphire ring, in a 9ct gold mount, size N1/2; 8.3 grams **£150-250**



## Jewellery, Watches, Coins & Silver, 22nd Jun, 2026 18:00

- 21 Two rings, comprising a pear-shaped synthetic sapphire ring, set in yellow metal stamped '14K', size L1/2, together with another ring, set with coated topaz, in a yellow metal mount stamped '10K', size P1/2; 9.2 grams **£150-250**



- 22 A double row cultured pearl necklace, featuring round pearls of cream body colour, ranging in size from 8.5mm x 3.0mm, strung to an unmarked white metal tongue clasp, set with three pastes (one deficient) and a pearl bead to centre (later repair), length approximately 50.0cm, 33.0 grams. **£80-120**



- 23 Two cocktail rings; the first set with an oval carnelian cabochon, bezel set in yellow metal, surface testing as 9ct, to a band testing as 22ct, size T, 10.33g; and another example set with an oval cut smokey quartz, to an open gallery with textured finish, British hallmarks for 9ct gold, size Y, 8.35g. Please note: Unless otherwise stated, lots have been tested using an electronic tester. This is a surface test only and is not a guarantee of metal purity. **£400-600**



- 24 A pair of malachite cufflinks, bearing indistinct marks, surface testing as 18ct, weight 14.3 grams, a pair of blue enamel chain cufflinks and a pair of round cufflinks, both in silver, total weight 26.3 grams, and four gilt dress studs set with a paste stone, and a gilt bar. Please note: Unless otherwise stated, lots have been tested using an electronic tester. This is a surface test only and is not a guarantee of metal purity. **£150-250**



- 25 A small group of jewellery items, to include; an ivy leaf brooch, hallmarked 9ct, weight 2.6 grams; a plain band ring, worn marks, surface testing as 9ct, ring size O 1/2, weight 1.0 grams; an Edwardian swallow pendant, set with seed pearls and a paste stone, stamped '9CT' to the reverse, weight 1.0 grams; and two pairs of gilt metal earrings. Please note: Unless otherwise stated, lots have been tested using an electronic tester. This is a surface test only and is not a guarantee of metal purity. **£200-300**



## Jewellery, Watches, Coins & Silver, 22nd Jun, 2026 18:00

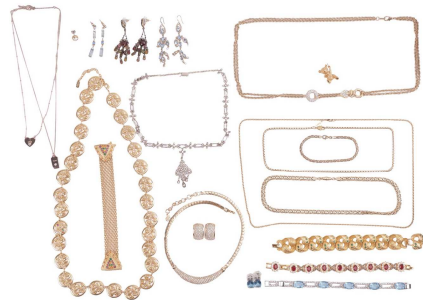
- 26 A pair of button ear clips, of domed form, with basketweave design, unmarked yellow metal testing as 18ct, 2.0 cm wide, to screw-on fittings marked '9ct', 9.7 grams.  
Please note: Unless otherwise stated, lots have been tested using an electronic tester. This is a surface test only and is not a guarantee of metal purity. **£400-600**



- 27 A group of jewellery to include; a beaded amethyst necklace, featuring a large amethyst crystal pendant and a smokey quartz necklace, both signed "Jacques An Lanh Paris", together with a cultured pearl and aquamarine bead chain necklace, in yellow metal stamped "375" and a pair of Lalique starfish earrings, boxed. **£100-150**



- 28 A collection of costume jewellery; to include a paste-set necklace and matching earrings by Christian Dior, boxed, together with a quantity of gilt metal and paste costume jewellery, including necklaces, bracelets and earrings, several signed "JBK". **£80-120**



- 29 A small group of jewellery items; comprising a 9ct gate link bracelet, a diamond and gem-set ring stamped "9k", size P 1/2, a 9ct white gold wedding band (tarnished), size T and a cultured pearl necklace with a 9ct clasp. Total weighable 16.7 grams. **£400-600**



- 30 Tiffany & Co. - two keyrings; the first with a large ship's wheel fob and the other of hexagonal form, with a circular charm, both signed Tiffany & Co. with travel pouch and box. 49.5 grams (2). **£50-100**



## Jewellery, Watches, Coins & Silver, 22nd Jun, 2026 18:00

- 31 A puffy hollow heart locket pendant, with inscription to the front 'Toujours presente Toujours chere', and a glazed compartment to the reverse, suspension loop to the top, pinkish metal testing as 9ct, 7.8 grams.  
Please note: Unless otherwise stated, lots have been tested using an electronic tester. This is a surface test only and is not a guarantee of metal purity. **£80-120**



- 32 A circular closed bangle, with an engine-turned design, width of band 3mm, in yellow metal stamped "750", 5.5 grams. **£300-500**



- 33 A mixed lot of jewellery to include; a vacant ring mount size L, a cross pendant and stud earrings set with CZs and a heart pendant all marked "18ct", weight 4.3g; together with a pendant, four CZ set stud earrings and a pair of pig studs, all surface testing as 9ct, 3.5g; total weight of items 7.8 grams.  
Please note: Unless otherwise stated, lots have been tested using an electronic tester. This is a surface test only and is not a guarantee of metal purity. **£200-300**



- 34 A group of silver and other items to include, a commemorative silver spoon in an Asprey box, a silver vesta case with fob chain and pendant seal, a hinged silver bangle, two marcasite set brooches, a paste-set lizard brooch, a Tissot wristwatch with box and papers dated 1965, a silver pocket watch and a gold-plated Waltham pocket watch with guarantee card dated 1923. Weighable 110.3 grams. **£80-120**



- 35 Four pairs of pearl earrings, all comprising cultured pearls, to include a pair of drop earrings, a pair in a 'snowflake' design and two others, all with post and butterfly fittings, all surface testing as 9ct, total weight 7.4 grams.  
Please note: Unless otherwise stated, lots have been tested using an electronic tester. This is a surface test only and is not a guarantee of metal purity. **£200-300**



## Jewellery, Watches, Coins & Silver, 22nd Jun, 2026 18:00

- 36 A cultured pearl necklace, the necklace comprising mostly even sized pearls, measuring approximately 7.00-7.50mm, strung on string, completed with a clasp set with amethysts and pearls, hallmarked 9ct gold, length approximately 75cm, weight 75.6 grams. **£300-500**



- 37 A flat curb link chain (broken) with lobster clasp stamped "9K", length 55.0cm including base metal split ring; together with a belcher chain (broken), terminating in a spring-ring clasp to one end and an Albert hook to the other, stamped "9C", total weight of items 11.45 grams (2). **£200-300**



- 38 A group of three rings; two set with three diamonds each, in yellow metal stamped "18ct", size N 1/2 and J, total weight 2.9g, together with a 9ct example, featuring three tri-colour heart charms, to a yellow gold band with British hallmarks for 9ct, size L, weight 1.8 grams. **£200-300**



- 39 A 9ct bangle, hollow, of hinged oval form, with push clasp and safety chain, engraved detail to one half, width 4.7mm, diameter 6cm, 6.0 grams. **£150-250**



- 40 A 9ct chain necklace, featuring "x" shaped links in tri-colour metal, terminating in a lobster clasp, with British hallmarks for 9ct gold, length 45.0 cm, weight 8.5 grams. **£200-300**



## Jewellery, Watches, Coins & Silver, 22nd Jun, 2026 18:00

- 41 A small group of jewellery items, including two Edwardian dress ring mounts, one of them set with diamond and sapphire with two gemstone deficient, the other with a broken shank and a missing stone; an intertwined ring pendant in yellow metal stamped with an Italian assay mark for 18ct; two 9ct wedding bands; total weight of items 12.4 grams. (5) **£400-600**



- 42 An opal doublet dress ring in 18ct gold, comprising an opal doublet of oval shape, measuring 13.8mm x 10.0mm, in a closed-back collet, between bifurcated shoulders to flat shank, British assay marks, size T½, 2.3 grams. **£150-250**



- 43 A serpentine bowenite bracelet and pendant; the bracelet formed of four cylindrical bowenite sections to circular links with Chinese characters for "prosperity", "health", "peace", and "longevity", in yellow metal stamped "14K"; together with a heart-shaped pendant with bail stamped "14K"; total weight 20.7 grams. **£80-120**



- 44 A two row pearl necklace, of graduated cultured pearls, strung knotted, with a garnet and seed pearl clasp, stamped '9ct', necklace length approximately 48cm, weight 27.9 grams. **£200-300**



- 45 A pair of 9ct gold chain cufflinks, each depicting a golfer and bag of clubs, bearing UK hallmarks for 9ct gold, weight 3.1 grams. **£80-120**



## Jewellery, Watches, Coins & Silver, 22nd Jun, 2026 18:00

- 46 A collection of cameo brooches and two lockets, three of the cameos surface testing as 9ct (one bearing UK hallmarks, the other possibly French import marks for non treaty) weight 31.3 grams, also with two picture lockets, both hallmarked 9ct gold, and a pair of cameo screw back earrings, stamped 9ct, total weight 11.8 grams, with three further cameos, two silver and one base metal, total weight 28.7 grams.  
Please note: Unless otherwise stated, lots have been tested using an electronic tester. This is a surface test only and is not a guarantee of metal purity. **£200-300**



- 47 A group of jewellery to include a 9ct white gold box chain (broken) together with a pair of black gem-set studs and a single shepherd hook, all surface testing as 9ct, total weight 3.2 g; together with a single emerald set stud stamped "585" 0.5g, and a ring of twisted black plastic and chain, testing as 18ct, size N, 0.6g.  
Please note: Unless otherwise stated, lots have been tested using an electronic tester. This is a surface test only and is not a guarantee of metal purity. **£100-200**



- 48 A signet ring with monogrammed 'LSFM' initials to the centre white metal plaque, to a yellow metal ring shank marked '9ct', ring size O, 15.1 grams. **£200-300**



- 49 A pair of hoop earrings set with oval-cut garnets and diamond accents, hinged post fittings, yellow metal testing as 9ct, 1.9 cm drop, 1.1 grams.  
Please note: Unless otherwise stated, lots have been tested using an electronic tester. This is a surface test only and is not a guarantee of metal purity. **£100-150**



- 50 Three gem-set rings; The first a ruby and diamond ring, featuring three graduating round-cut rubies, each interspersed by two grain-set single-cut diamonds, to a 9ct gold ring shank, ring size R; The second an illusion-set diamond half-eternity ring, featuring seven illusion-set round brilliant-cut diamonds, to a 9ct gold ring shank, ring size Q; The third an amethyst and diamond ring, featuring an oval-shaped amethyst flanked by shoulders set with a single-cut diamond, to a 9ct gold ring shank, ring size O; Gross weight 5.3 grams (3). **£150-250**



## Jewellery, Watches, Coins & Silver, 22nd Jun, 2026 18:00

- 51 A diamond half-eternity ring, featuring thirty-two single-cut diamonds in a white metal channel, leading to a white metal ring shank marked '750', ring size M, 1.5 grams. **£100-200**



- 52 Bottega Veneta - A crescendo spiral necklace, featuring graduating links set with cubic zirconia, the links arranged in a spiral design, necklace length approximately 35.0cm, signed, in white metal stamped 'AG925', with Italian maker's mark '1231 VI', 388.3 grams. **£600-800**



- 53 Tiffany & Co. - An Elsa Peretti for Tiffany & Co. "Bean" pendant, earrings and bracelet, all signed and stamped "925". 13.7 grams. With travel pouch and box. **£150-250**



- 54 A 9ct gold gate bracelet with heart padlock, together with a boxed gents dress set, buttons hallmarked 9ct gold, oval cufflinks tested as base metal; total weighable: 10.0 grams. Please note: Unless otherwise stated, lots have been tested using an electronic tester. This is a surface test only and is not a guarantee of metal purity. **£250-350**



- 55 Tiffany & Co. - Two necklaces, with heart charms and toggle clasps, together with a conforming bracelet, each signed, total weight 185.6 grams. With travel pouches and box. **£100-200**



## Jewellery, Watches, Coins & Silver, 22nd Jun, 2026 18:00

- 56 Four 9ct gold gemset rings, comprising an amethyst ring with diamond-set shoulders, a single stone citrine ring, both rings size Q 1/2, together with a topaz and emerald ring and a multi citrine ring, both ring size P 1/2, all rings are hallmarked 9ct gold, total weight 11.5 grams. **£200-300**



- 57 A collection of jewellery, to include a bracelet set with diamond chips, a turquoise bracelet, a tanzanite necklace and a dyed green quartz necklace, total weight 103.2 grams, **£150-250**



- 58 A pearl necklace, of graduated cultured pearls, strung knotted, with a 9ct white gold clasp, set with a diamond, necklace length approximately 43cm, weight 13.0 grams. **£80-120**



- 59 Christian Dior - A pair of abstract ear clips, signed Christian Dior, with clip back fittings, together with a necklace of a similar design (unsigned), total weight 122.0 grams. **£50-100**



- 60 A charm bracelet, comprising ten charms (one loose) depicting, a turtle, a camel, a car, a bird and others, on a curb link chain with a heart padlock clasp, total weight 37.0 grams. **£60-80**



## Jewellery, Watches, Coins & Silver, 22nd Jun, 2026 18:00

- 61 A collection of gold gentleman's accessories, including four dress studs, one with a ruby, all 18ct, weight 4.9 grams, a locket, four dress studs and a pearl set bale, all in 15ct, weight 8.7 grams, and a pair of screw back pearl drop earrings, two engraved pendants and a singular collar stiffener (in a green Asprey case) all in 9ct, weight 10.5 grams. **£700-900**



- 62 A pink synthetic spinel ring, centrally-set with a step-cut pale pink synthetic spinel, claw-set in a yellow metal mount stamped '18', size O; 5.4 grams **£200-300**



- 63 A group of gold and plated items, to include; a 9ct gate-link bracelet 10.0 grams, a 9ct propelling toothpick 5.5 grams, together with a plated floral brooch and a plated guard chain (4). **£300-500**



- 64 A 9ct gold torque bangle, formed of hollow wire, terminating in ball finials, with British hallmarks for 9ct gold, 3.9 grams. **£120-180**



- 65 Asapphire and diamond necklace, with an inky blue sapphire to the centre and an illusion cut diamond each side, in a rope/wrap around design, with a barell clasp and figure of eight safety catch, necklace length approximately 44cm, stamped '375' to the clasp, weight 6.1 grams. **£150-250**



## Jewellery, Watches, Coins & Silver, 22nd Jun, 2026 18:00

- 66 A paste eternity ring, the metal with faceted detail, unmarked, surface testing as 9ct, ring size N, weight 2.9 grams.  
Please note: Unless otherwise stated, lots have been tested using an electronic tester. This is a surface test only and is not a guarantee of metal purity. **£100-150**



- 67 A collection of silver and costume jewellery; to include a plated Seiko wristwatch and two other quartz watches, various CZ and gem-set silver and white metal rings, earrings and necklaces, a large enamelled cuff bracelet and various other beaded and paste-set items of jewellery. **£100-150**



- 68 A propelling pencil, with an engraved foliate design, stamped "9ct" with maker's mark "JB", 1.00 x 7.25 cm, 5.5 grams. **£150-250**



- 69 A group of cultured pearl jewellery; including a ring, set with a bluish-grey pearl of 9.5mm, set in yellow metal with Japanese assay marks for 18ct, size M, 4.5g; a pearl pendant of 8.5mm, the bail surface testing as 9ct, chain stamped "18K", 2.5g; a pair of conforming drop earrings, each featuring two pearls, with rods and screw back fittings testing as 9ct, 2.5g; and a (broken) pearl strand with a white metal clasp stamped "silver". Please note: Unless otherwise stated, lots have been tested using an electronic tester. This is a surface test only and is not a guarantee of metal purity. **£250-350**



- 70 A quantity of costume jewellery, much of it unworn. To include pieces by Givenchy, Ralph Lauren, Betsey Johnson, Catherine Stern, Napier, as well as other signed costume jewellery designers. **£80-120**



## Jewellery, Watches, Coins & Silver, 22nd Jun, 2026 18:00

- 71 Four gem-set rings, comprising a rose-cut smoky quartz, in a gold-plated mount, size P, an amethyst-set ring in a yellow metal mount marked '9K', size Q, a blue topaz ring, in yellow metal stamped '375', size P, a rhodolite garnet cluster ring, in a yellow metal mount stamped '375', size P; total weighable: 9.1 grams (4) **£200-300**



- 72 Two cultured pearl necklaces; The first featuring a single-row of 6.2mm cream cultured pearls, individually knotted, 48.5cm in length, to a 9ct gold clasp set with an oval amethyst cabochon, 26.2 grams; The second featuring a single-row of 8mm irregular cultured pearls, 41.0cm in length, to a white metal clasp marked 'silver', 33.6 grams. (2). **£80-120**



- 73 A small group of jewellery comprising a pearl-set bar brooch, the central pearl approximately 5mm, in a yellow metal mount stamped 585 to the reverse, together with an imitation pearl ring, in a floral design, in a yellow metal mount marked '585', size O, and another pearl-set ring of Modernist design, in a yellow metal mount marked 'K14', size L1/2; 11.5 grams (3) (Qty: 3) **£150-250**



- 74 Three rings, comprising a diamond-set blue enamel bombe ring, surface tested as 18ct, size L1/2, 6.2 grams, together with another blue enamel ring and a textured ring, both in white metal, one marked '800'; sizes F1/2 and L; total weight: 12.7 grams (3)  
Please note: Unless otherwise stated, lots have been tested using an electronic tester. This is a surface test only and is not a guarantee of metal purity. **£200-300**



- 75 Five gem-set rings in 9ct gold, comprising a ruby-set cluster ring, size P1/2, a tanzanite-set ring, size Q, a chrome diopside cluster ring, size P, and two lemon quartz-set ring, sizes P and Q, all hallmarked 9ct gold; 15.9 grams **£200-300**



## Jewellery, Watches, Coins & Silver, 22nd Jun, 2026 18:00

- 76 A graduated single row of pearls, cream body colour, ranging from 8.00 - 3.00mm, individually knotted to a white metal filigree tongue-clasp, set with a white sapphire of 1.5mm, length approx. 51.00cm, 13.0g, with a Mikimoto box. **£200-300**



- 77 A large quantity of fresh water (and one faux) pearl necklaces and other jewellery, including bangles set with keshi pearls and synthetic rubies in yellow metal, and matching hoop earrings, together with a tiger's eye pendant necklace, with hardstone beads, and toggle clasp stamped "silver". **£300-500**



- 78 A wedding band in 22ct yellow gold, comprising a 6.2mm wide band, Birmingham 1959, maker's mark CG&S, size 1½, 6.3 grams. **£300-500**



- 79 Three gem-set rings; The first claw-set with a grey coloured paste, to stylised foliate shoulders leading to a yellow metal ring shank marked '9ct', ring size L 1/2, 3.6 grams; The second an amethyst and diamond dress ring of checkerboard design, featuring five collet-set square-cut amethysts, flanked by grain-set single-cut diamonds, to a yellow metal ring shank surface testing as 9ct, ring size R, 2.0 grams; The third of abstract design, collet-set with a round-cut amethyst, to a 9ct gold ring shank, ring size P, 2.1 grams. (3).



Please note: Unless otherwise stated, lots have been tested using an electronic tester. This is a surface test only and is not a guarantee of metal purity. **£200-300**

## Jewellery, Watches, Coins & Silver, 22nd Jun, 2026 18:00

- 80 A group of jewellery; to include a garnet-set pendant of floral scrolled design, in yellow metal surface testing as 9ct, 1.7 grams; a garnet-set pendant of teardrop form with scrolled detail, in yellow metal surface testing as 9ct, 11.25 grams; an amethyst-set locket, featuring an oval-cut amethyst to the hinged cover of the locket, the hinged cover detailed with scrolled engraving, in yellow metal and to a pendant bale hallmarked for 9ct gold, 3.7 grams; A cameo pendant cum brooch, the pendant bale hallmarked for 9ct gold, to a base metal curb-link chain, 5.0 grams; a moonstone and synthetic ruby pendant, of scrolled design, stamped '9ct' to reverse, to a curb-link chain completed with a spring-ring clasp marked '9ct', 2.6 grams. (5).



Please note: Unless otherwise stated, lots have been tested using an electronic tester. This is a surface test only and is not a guarantee of metal purity. **£300-500**

- 81 Five gem-set rings in 9ct gold, comprising two amethyst-set rings, sizes Q and P, a praisolite-set ring, size P, a diamond-set twist ring, size P, and a chrome diopside-set ring, size O1/2, all hallmarked 9ct gold; 17.7 grams **£200-300**



- 82 A group of costume jewellery; to include five pairs of white metal drop earrings, of abstract designs, one gem-set, four stamped '925', one stamped '375'; thirty dress rings, the majority gem-set in white and yellow metal stamped '925', with two glass examples, sizes ranging from M - U; three gilt metal necklaces, stamped '925'; two pairs of tiger's eye earrings along with other examples of earrings, pendants, bracelets and a Moonwatch bracelet stamped '0,800' to reverse. **£200-300**



- 83 A sapphire and diamond hinged bangle, featuring a central row of five marquise-shaped blue sapphires, each interspersed with two single-cut diamonds, to a yellow metal hinged bangle completed with an expanding box clasp, yellow metal surface testing as 14ct, inner circumference approximately 18.0cm, 6.2 grams.



Please note: Unless otherwise stated, lots have been tested using an electronic tester. This is a surface test only and is not a guarantee of metal purity. **£280-350**

## Jewellery, Watches, Coins & Silver, 22nd Jun, 2026 18:00

- 84 Three cultured freshwater pearl necklaces, the first composed of a strand of rice-shaped pearls, to a yellow metal lobster clasp surface tested as 18ct, the additional two necklaces composed of strands of dyed potato-shaped pearls, each with yellow metal clasps, stamped '14K'; 116.6 grams (3). Please note: Unless otherwise stated, lots have been tested using an electronic tester. This is a surface test only and is not a guarantee of metal purity. **£80-120**



- 85 A small group of jewellery, to include; a 9ct gold court-shaped band ring, ring size K, 3.6 grams; a 9ct gold band ring with chevron engraved detail, ring size J, 3.5 grams; a colourless paste eternity ring, in yellow metal stamped '9ct', ring size J 1/2, 2.4 grams; a 9ct gold crucifix, 1.0 grams. (4). **£300-400**



- 86 A cultured pearl strand necklace, featuring Akoya pearls measuring 6.5mm - 7.0mm, of cream colour with pinkish lustre, individually knotted to a filigree tongue-clasp, in yellow metal stamped "14K" (tongue broken), length 45.0cm, 26.5 grams. **£100-200**



- 87 A diamond-set pendant on chain, the pendant of stylised heart form, highlighted with four claw-set round brilliant-cut diamonds of graduating sizes, the heart pendant in yellow metal surface testing as 14ct, to a yellow metal box chain completed with a spring-ring clasp marked '585', necklace length approximately 50.5cm, 10.2 grams. Please note: Unless otherwise stated, lots have been tested using an electronic tester. This is a surface test only and is not a guarantee of metal purity. **£450-650**



- 88 A yellow metal abstract link bracelet, measuring 18.0cm in length, one link broken and will require repair to be worn, completed with an integral box clasp with additional safety catch, the clasp stamped '14K', 10.2 grams. **£450-550**



## Jewellery, Watches, Coins & Silver, 22nd Jun, 2026 18:00

- 89 A large quantity of beaded jewellery, costume jewellery and silver; to include various necklaces, bracelets and earrings with examples featuring freshwater pearls, lapis, coral, quartz and bone; a white metal bangle stamped "925" set with nine graduated cubic zirconias; a number of quartz wristwatches with examples by Citizen, Accurist, and Rotary amongst others; and various other items of jewellery. **£300-500**



- 90 A group of jewellery and watches to include; a lady's mid-20th century diamond-set dress watch, with case stamped "14K", to a plated bracelet strap; a gentleman's gold-plated Longines dress watch with small diamond markers at 12, 3, 6 and 9, a faux pearl necklace and a quantity of other gem-set silver and costume jewellery. **£300-500**



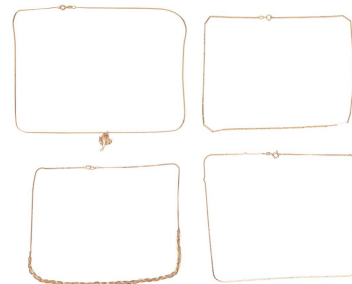
- 91 An opal triplet ring; featuring an oval triplet cabochon of 8.25mm x 6.10mm, prong-set within an organic, textured mount of unmarked yellow metal, surface testing as 14ct, size I 1/2, 4.0grams.  
Please note: Unless otherwise stated, lots have been tested using an electronic tester. This is a surface test only and is not a guarantee of metal purity. **£150-250**



- 92 A diamond and sapphire-set necklace, featuring a central articulated cluster drop comprising a pear-shaped dark blue sapphire encircled by a row of sixteen graduating round brilliant-cut diamonds, the cluster suspended from a wishbone form set with graduating round-cut sapphires and brilliant-cut diamonds, extending from a yellow metal snake chain, the necklace surface testing as 14ct and completed with an integral box clasp with additional safety catch, necklace measuring approximately 44.0cm in length, 11.8 grams.  
Please note: Unless otherwise stated, lots have been tested using an electronic tester. This is a surface test only and is not a guarantee of metal purity. **£700-900**



- 93 A small group of chain necklaces, to include; a triangular box-link chain, 45.5cm in length, completed with a spring ring clasp marked '14K', 3.6 grams; a snake chain with amethyst set pendant of floral design, 50.5cm in length, completed with a spring ring clasp marked '585', 4.0 grams; a three strand woven S-link chain, 42.5cm in length, completed with a spring ring clasp marked '14K', 4.0 grams; a fetter-link chain, 46.0cm in length, completed with a spring ring clasp marked '14K', 6.1 grams. (4). **£650-800**



## Jewellery, Watches, Coins & Silver, 22nd Jun, 2026 18:00

- 94 A pair of cushion shaped cufflinks, with crosshatch texture to head, to bullet backs, the cufflink head measuring 17mm x 19mm, stamped and surface testing as 14ct, 10.2 grams.  
Please note: Unless otherwise stated, lots have been tested using an electronic tester. This is a surface test only and is not a guarantee of metal purity. **£450-550**



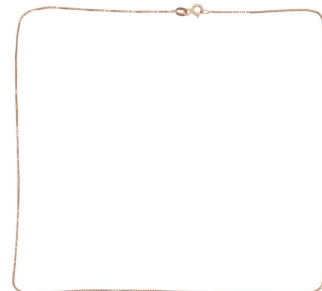
- 95 A small group of seven pendant charms, all marked '14K' or surface testing as 14ct, comprising a sapphire-set floral pendant, a teardrop-shaped pendant, a blue paste heart pendant, a bell charm, an initial 'M' charm, a stylised drop pendant, and a floral-style drop pendant; 10.3 grams (7)  
Please note: Unless otherwise stated, lots have been tested using an electronic tester. This is a surface test only and is not a guarantee of metal purity. **£400-600**



- 96 An emerald and diamond-set pendant, of stylised foliate design, asymmetrically-set with two step-cut emeralds and a round brilliant diamond, in yellow metal surface tested as 18ct; 2.0 grams  
Please note: Unless otherwise stated, lots have been tested using an electronic tester. This is a surface test only and is not a guarantee of metal purity. **£100-200**



- 97 A fine box link chain in yellow metal, completed with spring-ring clasp stamped '14K', 45.0 cm in length, 2.2 grams. **£80-120**



- 98 A 22ct gold band ring, the band measuring 3.1mm in width, ring size S, 5.4 grams. **£300-500**



## Jewellery, Watches, Coins & Silver, 22nd Jun, 2026 18:00

- 99 A collection of silver and antique gilt metal jewellery; to include many pieces of Mexican silver, including items signed by Margot de Taxo and other notable Mexican designers, Danish silver brooches, examples of early 20th century, Art Nouveau, Arts and Crafts, mid-century and contemporary costume jewellery brooches, earrings, and necklaces, some signed. Presented in five velvet-lined trays. **£300-500**



- 100 A large quantity of costume jewellery, to include a pair of faux pearl and paste earrings by Miriam Haskell, paste-set brooches by Weiss, and various other examples by Napier, Les Bernard, Donales Stanard and other notable costume jewellery designers. Accompanied by two velvet-lined presentation trays. **£300-500**



- 101 A group of predominantly costume jewellery, together with other items; including a curb chain bracelet, featuring a circular charm engraved "G.W.N.", in unmarked yellow and pink metal, charm and clasp surface testing as 9ct, chain testing as 14ct; weight 3.5 grams; a Victorian pinchbeck bracelet with interlocking floral links and a pierced-work clasp; a sweater guard circa 1950s; and various gilt metal chains, cufflinks and other items of jewellery, religious medals and novelty spoons, in a travel case with integral clock. Please note: Unless otherwise stated, lots have been tested using an electronic tester. This is a surface test only and is not a guarantee of metal purity. **£100-200**



- 102 A pair of pearl stud earrings, each earring composed of a cultured pearl measuring approximately 7.5mm, to yellow metal mounts with screw backs, stamped '9ct'; 2.5 grams **£50-100**



- 103 A collection of plated costume jewellery, including, three long chain necklaces, a collection of brooches, a rolled gold ring, a gold plated note pad case. **£50-100**



## Jewellery, Watches, Coins & Silver, 22nd Jun, 2026 18:00

- 104 A cultured pearl and diamond pendant on chain, the pendant featuring an 11.4 mm black cultured pearl, the bale diamond set, stamped 375, on a gilt metal chain, pendant weight 3.2 grams **£60-80**



- 105 A two row cultured pearl bracelet, comprising pearls measuring approximately 6.0-6.2mm, strung with knots, with two spacers mid row, to a pearl set clasp, bearing British hallmarks for 9ct gold, bracelet length approximately 18cm, weight 18.7 grams. **£80-120**



- 106 A 9ct gold ruby and diamond half eternity ring, featuring five round-cut rubies, each interspersed with a round brilliant-cut diamond, in a 9ct gold channel setting, ring size N, 1.2 grams. **£80-120**



- 107 A baroque pearl necklace and matching bracelet, the treated black baroque pearls leading to an open circle clip clasp, the bracelet with a clip clasp in white metal marked '925'; 96.0 grams (2) **£80-120**



- 108 A cultured pearl sautoir necklace, the cultured pearl necklace leading to a detachable cultured pearl tassel, in base metal; 100.7 grams **£80-120**



## Jewellery, Watches, Coins & Silver, 22nd Jun, 2026 18:00

- 109 Two pearl necklaces and a bracelet; The first necklace featuring white baroque pearl intervals, knotted on cord, completed with a spring ring clasp in white metal testing as base, necklace measuring 104.0cm in length; The second a cable-link white metal chain with button-shaped baroque pearls alternating between white and brown hues, completed with a lobster clasp, measuring 76cm in length; the bracelet featuring fifteen button-shaped baroque pearls on an elasticated cord, inner circumference (not stretched) approximately 15.0cm; Total weight 83.5 grams (3).  
Please note: Unless otherwise stated, lots have been tested using an electronic tester. This is a surface test only and is not a guarantee of metal purity. **£100-150**



- 110 A group of necklaces and a bracelet, the first a cultured pearl and ruby bead necklace, the lower half with white metal bead spacers and a cultured pearl drop, completed with a white base metal magnetic clasp, measuring 45.0cm in length; The second a cultured pearl and lapis lazuli bead necklace, the lower half with white metal bead spacers and a cultured pearl drop, completed with a white base metal magnetic clasp, measuring 46.0cm in length; The bracelet composed of lapis lazuli bead alternated with round white cultured pearls completed with a white metal lobster clasp marked '925', measuring 21.0cm in length; The third necklace comprising round white cultured pearls and three lapis lazuli beads to the centre, two of teardrop form, to a white metal clasp marked '925', set with a lapis lazuli cabochon, measuring 44.0cm in length; Total weight 168.0 grams (4). **£100-150**



- 111 A baroque dyed pearl necklace with magnetic clasp, together with a pair of matching drop earrings, in white metal stamped '925', and another baroque pearl necklace with white metal clasp marked '925'; 103.6 grams **£100-150**



- 112 A lilac freshwater baroque pearl suite, including a necklace, bracelet and pair of earrings, the necklace featuring graduating lilac baroque pearls, individually knotted and to a hinged clasp in white metal stamped 'S925', 49.5cm in length; The bracelet also featuring graduating lilac baroque pearls, individually knotted and to a hinged clasp in white metal stamped 'S925', 21.5cm in length; The earrings each featuring a single lilac baroque pearl measuring approximately 13.0mm in diameter, to post fittings with butterfly backs, in white metal surface testing as base; Total weight 220.0 grams (3).  
Please note: Unless otherwise stated, lots have been tested using an electronic tester. This is a surface test only and is not a guarantee of metal purity. **£100-150**



## Jewellery, Watches, Coins & Silver, 22nd Jun, 2026 18:00

- 113 A baroque pearl single-strand necklace and earring suite, the row of grey baroque pearls, strung and knotted, interspersed by white metal beads, to an oval clasp decorated with circular colourless paste, together with earrings en suite, with post fittings, stamped 925, necklace length 40.6cm, total weight 113.5 grams (2). **£100-150**



- 114 A small group of freshwater baroque pearl jewellery, comprising a dark grey baroque pearl necklace with white metal clasp stamped '925', a matching bracelet with clasp marked '925' and matching earrings, together with a freshwater baroque pearl necklace and matching drop earrings; 161.2 grams **£100-150**



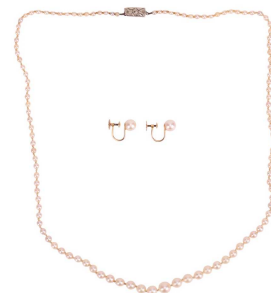
- 115 A single diamond-set drop earring, featuring three interlocking rings, two diamond-set, to post fitting and butterfly back, drop length 3.4cm, 2.6 grams. **£100-200**



- 116 A coral and pearl bracelet, the fancy links interspersed with alternating coral beads and cultured pearls, to a bolt ring clasp, hallmarked 9ct gold; 3.0 grams **£100-200**



- 117 A pearl necklace and earrings, the necklace comprising a single row of graduated pearls (untested), individually knotted, the clasp set with diamond chips, unmarked, necklace length approximately 56.0cm, weight 9.7 grams, with pearl earrings with screw back fittings, stamped 9ct, weight 1.8 grams. (2). **£100-200**



## Jewellery, Watches, Coins & Silver, 22nd Jun, 2026 18:00

- 118 A carved hardstone necklace, possible jadedite or prehnite, depicting carved leaves, with smaller aventurine quartz beads, on a cord necklace, necklace length approximately 64.0cm, weight 23.1 grams. **£100-200**



- 119 Two bracelets, including, a white metal bracelet, composed of elongated curb links, with hinged clasp, with 'weevil' French import mark for silver, together with an abstract-style bangle, with 'crab' French import mark for silver; 44.0 grams (2) **£100-200**



- 120 An Edwardian gem-set scroll pendant on chain, openwork motif set with circular-cut green pastes and split pearls, on a loop bail stamped '9ct', 4.0 cm drop length, on a 41.0 cm long quatrefoil-shaped paperclip chain with spring-ring clasp also stamped '9ct', 3.2 grams. **£100-200**



- 121 A sapphire and diamond cluster ring, the oval-shaped sapphire, weighing approximately 0.35ct, within a brilliant-cut diamond surround, approximately 0.15ct total, mounted in yellow metal, stamped 10K, ring size M, gross weight 2 grams. **£100-200**



- 122 A gem-set name tag bracelet in 9ct gold, the navette-shaped panel engraved with the name 'Juliana', connecting to a series of twisted gate links, decorated with sapphire and cubic zirconia stations, spring-ring clasp bearing British assay marks, overall length 18.0cm, 3.3 grams. **£100-200**

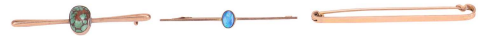


## Jewellery, Watches, Coins & Silver, 22nd Jun, 2026 18:00

- 123 A garnet and half pearl pendant necklace, the claw-set circular-cut garnet within a surround of eight 2.8mm half pearls, suspended from a tapered loop with a single half pearl, mounted in 9ct yellow gold, stamped with Birmingham hallmark, to a trace-link chain, testing as 9ct, broken, with charm engraved A.C.Hewitt 26.8.60 Jersey, pendant length 2.6cm, chain length 40.6cm, gross weight 4.97 grams. Please note: Unless otherwise stated, lots have been tested using an electronic tester. This is a surface test only and is not a guarantee of metal purity. **£100-200**



- 124 Three bar brooches, to include two gem-set examples, one an opal doublet, each example stamped '9ct', one with a base metal pin, one with pin deficient, total weight 8.0 grams (3). **£100-200**



- 125 An imitation turquoise and blue topaz pendant necklace, the pendant stamped '9k 375', pendant weighing 4.7 grams; on a gilt metal chain, total weight 9.4 grams. **£100-200**



- 126 A sapphire and diamond cluster ring, in a claw setting, mounted in 9ct gold, with British hallmarks, ring size L, weight 4.2 grams. **£100-200**



- 127 A collection of jewellery and costume jewellery; to include a pair of amethyst earrings with screw backs, in unmarked yellow metal surface testing as 9ct, 11.5g; a single pearl spray earring stamped "14K", 3.5g; a small scrollwork bead, testing as 18ct, 0.5g; and a small fitting testing as 9ct, 0.5g; a Georgian girandole brooch set with foil-backed pastes; a Danish silver daisy brooch, together with a Victorian hardstone and silver-gilt vinaigrette, and various other items of jewellery, assorted coins, lighters and medals. Please note: Unless otherwise stated, lots have been tested using an electronic tester. This is a surface test only and is not a guarantee of metal purity. **£100-150**



## Jewellery, Watches, Coins & Silver, 22nd Jun, 2026 18:00

- 128 A 9ct ruby and diamond cluster ring, with open work shoulders, stamped 9k and marked QVC, ring size L.5, weight 4.1 grams. **£120-180**



- 129 A diamond solitaire ring, with a round brilliant-cut diamond, in an eight claw setting, estimated diamond weight 0.35 carats, stamped 18ct, ring size N 1/2, weight 2.5 grams. **£150-250**



- 130 An amethyst and diamond dress ring, claw-set with an oval-cut amethyst of 14.0 x 9.5 x 5.8 mm, embellished with two diamond accents to the sides, between tapered shoulders, in yellow metal marked '750', size M½, 3.3 grams. **£150-250**



- 131 An amethyst and diamond cluster ring, featuring three oval-shaped amethysts of graduating sizes, encircled by a border of single-cut diamonds, to a yellow metal ring shank marked '14K', ring size L 1/2, 3.7 grams. **£150-250**



- 132 A five row sapphire ring, each polished band claw-set with either one, two or three circular-cut sapphires, to a polished connecting band, mounted in yellow metal, surface testing as 9ct, ring size L 1/2, gross weight 5.16 grams. Please note: Unless otherwise stated, lots have been tested using an electronic tester. This is a surface test only and is not a guarantee of metal purity. **£150-250**



## Jewellery, Watches, Coins & Silver, 22nd Jun, 2026 18:00

- 133 A diamond floral cluster ring, composed of seven single-cut diamonds, approximately 0.20ct total, within an undulating surround, mounted in white and yellow metal, stamped Plat and 18ct, ring size K 1/2, gross weight 2.02 grams, **£150-250**



- 134 A pair of diamond-set rings, 1st) the six claw-set brilliant-cut diamond, weighing approximately 0.35ct, to tapered shoulders, mounted in 18ct yellow gold, stamped with European convention mark, 2nd) six claw-set brilliant-cut diamond, weighing approximately 0.20ct, flanked by single-cut diamonds, approximately 0.06ct total, in square setting, mounted in 9ct yellow gold, stamped with London hallmark and maker's mark possibly HOG, ring sizes M 1/2 and L 1/2, gross weight 3.6 grams (2) **£150-250**



- 135 A cameo brooch, featuring the bust of a lady in profile, wearing a pendant necklace set with a diamond measuring approximately 2.5mm, with filigree mount in unmarked yellow metal, surface testing as 14ct, hinged pin fitting to reverse, dimensions 5.0 x 4.0 cm, 15.2 grams.  
Please note: Unless otherwise stated, lots have been tested using an electronic tester. This is a surface test only and is not a guarantee of metal purity. **£150-250**



- 136 A ruby and diamond ring, with an oval faceted treated ruby and diamond set shoulders, all claw set, in yellow metal hallmarked 9ct, ring size S, weight 2.8 grams. **£150-250**



- 137 A 9ct medal pendant depicting the Virgin Mary, UK hallmarks for 9ct, the pendant measures approximately 3.5 cm including the bale, weight 6.1 grams. **£180-220**



## Jewellery, Watches, Coins & Silver, 22nd Jun, 2026 18:00

- 138 A mixed lot of antique jewellery, including, an amethyst pendant with half seed pearls and marcasite, in silver, attached to a later silver bow brooch, hallmarked Birmingham 1993, with a purple and white paste brooch, in silver, weight 14.5 grams **£200-300**



- 139 A synthetic ruby and diamond ring, to the center a marquise-cut synthetic ruby, claw set, within a double row of similarly-set brilliant-cut diamonds, approximately 0.45ct total, mounted in yellow metal, stamped 14K, ring size L 1/2, weight 3.93 grams. **£200-300**



- 140 A diamond single-stone ring, the four-claw set brilliant-cut diamond, approximately 0.08ct, between reeded shoulders, mounted in yellow metal, stamped 18K, ring size O 1/2, gross weight 3.82gms **£200-300**



- 141 A diamond cluster ring, of tiered design, claw-set throughout with brilliant-cut diamonds, to bifurcated shoulders similarly-set with diamonds, stated weight 0.86ct total, mounted in white metal stamped '18K', ring size N 3/4, gross weight 3.02 grams. **£200-300**



- 142 A diamond cluster ring, illusion-set with a brilliant-cut diamond cluster, to similarly-cut diamond swirl shoulders, approximately 0.42ct total, mounted in yellow metal, stamped '750', ring size N, gross weight 3.38 grams. **£200-300**



## Jewellery, Watches, Coins & Silver, 22nd Jun, 2026 18:00

- 143 A group of pearl jewellery; The first piece a cultured pearl and blue lace agate bead necklace, 51.0cm in length; The second piece a cultured pearl and blue lace agate bracelet of matching design, inner circumference approximately 16.0cm; A pair of blue lace agate earrings, to gem-set surmounts; A graduated cultured pearl necklace, highlighted with a blue agate bead to the centre, the necklace individually knotted and measuring 47.0cm in length, to a white metal gem-set clasp marked 'S925'; Together with a bracelet of matching design, 20.0cm in length; The final piece a cultured pearl necklace with light blue agate beads, white metal clasp marked 'S925', 42.0cm in length; Total weight 205.0 grams (6). **£200-300**



- 144 A cultured pearl necklace, featuring cultured South Sea pearls of white, gold and brown hues, measuring approximately 12.9mm in diameter, to a cable-link chain completed with a spring ring clasp marked '375', measuring approximately 76.0cm in length, 46.1 grams. **£200-300**



- 145 A dyed agate necklace with boulder opal clasp, comprising a series of large dyed agate faceted beads, dyed into blueish-green colour, completed with a toggle clasp featuring a large freeformed boulder opal of 2.8cm x 1.8cm, mounted in 18ct yellow gold, maker's mark 'OL', Sheffield, overall length 60.5 cm, 143.0 grams. **£200-300**



- 146 A large group of costume jewellery, to include examples of earrings, brooches, necklaces and bracelets, such as a coral bead necklace and modernist necklaces in white metal, as well as numerous quartz wristwatches and a base metal pocket watch marked '875'. **£200-300**



- 147 A ruby, garnet and diamond ring, including two oval rubies and one garnet, claw set, detailed with four diamond chips, unmarked, testing as 18ct yellow gold, ring siz N.5, weight 3.3 grams.  
Please note: Unless otherwise stated, lots have been tested using an electronic tester. This is a surface test only and is not a guarantee of metal purity. **£200-300**



## Jewellery, Watches, Coins & Silver, 22nd Jun, 2026 18:00

- 148 A treated green and golden cultured South Sea pearl necklace, with a row of large baroque cultured pearls in alternating colours, to a quatrefoil hook clasp set with cubic zirconias, stamped '925', overall length 66.5 cm, 156.5 grams. **£200-300**



- 149 A white cultured South Sea pearl necklace, comprising a row of large graduated baroque pearls, to a gilt clasp set with cubic zirconias, stamped '925', overall length 51.5cm, 93.0 grams. **£200-300**



- 150 † A collection of loose gemstones, some synthetic, including low-grade emeralds, citrines, rubies and other items. **£200-300**



- 151 A 9ct diamond crucifix pendant, chanel set diamonds within the crucifix, hallmarked 9ct, on a gilt metal chain, pendant weight 2.4 grams. **£200-300**



- 152 An 18ct signet ring set with onyx, the oval-ring head inset with a vacant onyx panel, 11.7 x 8.9 x 2.5 mm, to tapering shank, British hallmarks, size O½, 6.5 grams. **£200-300**



## Jewellery, Watches, Coins & Silver, 22nd Jun, 2026 18:00

- 153 A diamond and enamel crossover ring, each heart-shaped clusters centrally collet-set with a table-cut diamond within a surround of claw-set brilliant-cut diamonds, approximately 0.45ct total, with applied pink and golden enamel to the gallery, the band decorated with pink enamel cloisonne, some deficient, mounted in yellow metal, testings as 18ct gold, ring size M, gross weight 6.54grams  
Please note: Unless otherwise stated, lots have been tested using an electronic tester. This is a surface test only and is not a guarantee of metal purity. **£250-350**



- 154 A group lot of jewellery items comprising an emerald-set cluster ring, in 9ct gold, a ruby-set cross pendant in yellow metal stamped '14K', a sapphire and diamond-set pendant, in yellow metal stamped '750', and an illusion-set diamond bracelet, in white metal stamped '925'; 16.0 grams **£250-350**



- 155 A synthetic colour-changing sapphire cocktail ring, and an amethyst stick pin; the ring contains a large, elongated oval-cut synthetic colour-changing sapphire, in a mount adorned with wires and florettes, to a flat shank, in yellow metal stamped '585', size M½, 12.9 grams; the stick pin claw-set with an oval-cut amethyst, with seed pearls to the cardinal points, in gilt metal, 7.2 cm long. (2) **£300-500**



- 156 A diamond-set bracelet, featuring rectangular sections grain-set with five single-cut diamonds, interspersed with small sections grain-set with three single-cut diamonds, in white metal marked '14K', clasp deficient, bracelet link broken, will require repair, 7.2 grams. **£300-500**



- 157 A sapphire and diamond dress ring, set to the centre with a square-cut blue sapphire, surrounded by round brilliant-cut diamonds and four marquise-shaped blue sapphires, with diamond-set shoulders, all stones claw-set, unmarked yellow metal, surface testing as 18ct, ring size M, weight 4.6 grams.  
Please note: Unless otherwise stated, lots have been tested using an electronic tester. This is a surface test only and is not a guarantee of metal purity. **£300-500**



## Jewellery, Watches, Coins & Silver, 22nd Jun, 2026 18:00

- 158 A 9ct bracelet, consisting of a double link curb bracelet, with a heart padlock (safety chain broken) total weight 12.8 grams. **£300-500**



- 159 An 18ct gold wedding band, court shaped, with initial engraving to the inside, British hallmarks for 18ct yellow gold, ring size N, weight 4.6 grams. **£300-500**



- 160 A mabe pearl and diamond set pendant, featuring a white mabe pearl measuring approximately 15.55mm x 15.37mm x 10.34mm, with a modernist mount detailed with eight round brilliant-cut diamonds, and a small bale loop, testing as 18ct, weight 11.7 grams.  
Please note: Unless otherwise stated, lots have been tested using an electronic tester. This is a surface test only and is not a guarantee of metal purity. **£300-500**



- 161 A pair of green paste and cubic zirconia earrings, featuring an emerald cut green paste, claw-set, and a half-halo of cubic zirconia highlighting each green paste, with post and clip fittings, stamped '585', surface testing as 14ct, weight 5.5 grams.  
Please note: Unless otherwise stated, lots have been tested using an electronic tester. This is a surface test only and is not a guarantee of metal purity. **£400-600**



- 162 An 18ct chain and 9ct clasp, the chain a flat curb link stamped '750' with bolt clasp, the clasp of foliate design set with a single cultured pearl, and a swivel clasp, unmarked but surface testing as 9ct, total weight 12.6 grams.  
Please note: Unless otherwise stated, lots have been tested using an electronic tester. This is a surface test only and is not a guarantee of metal purity. **£400-600**



## Jewellery, Watches, Coins & Silver, 22nd Jun, 2026 18:00

- 163 A 9ct pendant and chain, the pendant of circular design, surface testing as 9ct, to a cable link chain, unmarked, stamped 9k to the lobster clasp, surface testing as 9ct, total weight 14.2 grams.  
Please note: Unless otherwise stated, lots have been tested using an electronic tester. This is a surface test only and is not a guarantee of metal purity. **£400-600**



- 164 A cultured pearl and enamel fancy link bracelet, featuring a series of quatrefoil links with green plique-a-jour enamel, flanked by cultured pearl spacers, completed with a lobster clasp, in yellow metal struck with Italian assay marks for 18ct, maker's mark for Giallo S.r.l, overall length 19.0 cm, 5.9 grams. **£400-600**



- 165 † A natural loose sapphire, very dark blue, displaying clear colour zoning, the stone measures approximately 19.38 x 15.97 x 6.59 mm with an estimated total weight of 17.09 carats, weight 3.5 grams. **£500-800**



- 166 A pair of clip earrings, with a textured finish, stamped 'Italy 750', the earrings measure approximately 1.8cm in length, 12.9 grams. **£500-700**



- 167 † A group of thirteen small brilliant-cut diamonds, the largest approximately 0.30 carat, total loose stones 0.3 grams. split out from line 16 **£50-100**



## Jewellery, Watches, Coins & Silver, 22nd Jun, 2026 18:00

- 168 A group of six wristwatches; to include two early 20th century lady's wristwatches in white metal, together with four gentleman's plated quartz wristwatches, and a multi-watch display case (6). **£50-100**



- 169 **IWC - Dress Watch**  
**Bezel:** Smooth  
**Case Material:** Stainless Steel  
**Case Diameter:** 30mm  
**Dial:** Silvered (Damaged), Luminous Syringe Hands  
**Numerals:** Arabic, Minute Track  
**Crown:** Signed, Fluted  
**Movement:** Manual Wind  
**Complication:** Seconds Subsidiary Dial at six o'clock  
**Strap:** Deficient  
**Box:** No  
**Papers:** No  
**Gross Weight:** 28.5 grams **£100-200**



- 170 **Omega - De Ville Quartz**  
**Reference:** 196.0312  
**Bezel:** Smooth  
**Case Material:** Stainless Steel  
**Case Diameter:** 32mm  
**Dial:** Cream, Pointed Baton Hands  
**Numerals:** Baton, Minute Track  
**Crown:** Signed, Fluted  
**Movement:** Omega Calibre M701.1330 (ETA Calibre 255.411)  
 Six-Jewel Quartz Movement  
**Complication:** Date Aperture at three o'clock  
**Strap:** After-Market Black Strap  
**Inner Circumference:** Approximately 16.5cm - 20.0cm  
**Buckle:** After-Market Gold-Plated Buckle  
**Box:** Yes  
**Papers:** No  
**Gross Weight:** 23.5 grams **£100-200**



## Jewellery, Watches, Coins & Silver, 22nd Jun, 2026 18:00

- 171 **Frederique Constant - Horological Smartwatch**  
**Reference:** FC-285X5B4/6  
**Serial:** 2AD7G0001  
**Bezel:** Smooth  
**Case Material:** Stainless Steel  
**Case Diameter:** Approximately 40mm  
**Dial:** White, Leaf Hands  
**Numerals:** Roman, Baton, Minute Track  
**Crown:** Signed  
**Movement:** MMT-285 Quartz Movement  
**Complication:** Subsidiary Dial at six o'clock, Outer Ring displaying Activity, Inner Ring displaying Sleep  
**Strap:** Stainless Steel Five-Link Bracelet  
**Inner Circumference:** Approximately 20.0cm  
**Buckle:** Unsigned, Push Button Deployment Double Clasp  
**Box:** No  
**Papers:** No  
**Gross Weight:** Approximately 129.0 grams **£100-200**



- 172 Three Watches; Omega De Ville, 32mm, not currently running;  
 Longines Türlér, 35mm, running intermittently; Longines gold-plated dress watch, reference L5.125.2, serial 26927560, dial discoloured, 18mm; Total weight 117.0 grams (3). **£100-200**



- 173 **Rolex - Dress Watch (No Strap)**  
**Reference:** 662540  
**Bezel:** Smooth  
**Case Material:** Silver  
**Case Diameter:** 34mm  
**Dial:** White, Blued Hands  
**Numerals:** Black, Red at Twelve o'clock, Minute Track  
**Crown:** Fluted  
**Movement:** 15-Jewel Manual Wind, Signed Rolex,  
**Complication:** Seconds Subsidiary Dial at six o'clock  
**Strap:** None  
**Box:** No  
**Papers:** No  
**Gross Weight:** 27.8 grams **£100-200**



## Jewellery, Watches, Coins & Silver, 22nd Jun, 2026 18:00

- 174 **Omega - Geneve Dynamic**  
**Bezel:** Smooth  
**Case Material:** Stainless Steel  
**Case Diameter:** 30mm x 26mm  
**Dial:** Blue, Silvered, Pointed Baton Hands  
**Numerals:** Baton, Minute Track  
**Crown:** Signed, Fluted  
**Movement:** Automatic  
**Complication:** Date Aperture at three o'clock  
**Strap:** Stainless Steel Brick-Link Strap  
**Inner Circumference:** Approximately 16.0cm  
**Buckle:** Signed, Stainless Steel, Fold-Over Clasp, marked '5898/147'  
**Box:** No  
**Papers:** No  
**Gross Weight:** 52.9 grams  
 Please note this watch has not been opened. The movement has not been checked and therefore cannot be guaranteed.  
**£150-250**



- 175 **Roamer - 14ct Gold Dress Watch**  
**Reference:** 18705  
**Year:** Hallmarked 1963  
**Bezel:** Smooth  
**Case Material:** 14ct Gold  
**Case Diameter:** 18mm x 18mm  
**Dial:** White (Discoloured), Pointed Baton Hands  
**Numerals:** Baton  
**Crown:** Deficient  
**Movement:** Roamer 17-Jewel Manual Wind Movement  
**Strap:** After-Market Brick Link Strap  
**Inner Circumference:** Approximately 16.5cm - 17.0cm  
**Buckle:** After-Market 9ct Gold Fold-Over Clasp  
**Box:** No  
**Papers:** No  
**Gross Weight:** 24.9 grams **£200-300**



- 176 **Omega - Genève Dress Watch**  
**Reference:** 511.417  
**Serial:** 35941747  
**Bezel:** Smooth  
**Case Material:** Gold-Plated Stainless Steel  
**Case Diameter:** 32mm x 26mm  
**Dial:** Gold-Tone, Brushed, Black Pointed Baton Hands  
**Numerals:** Baton  
**Crown:** Signed, Fluted  
**Movement:** Omega Calibre 625 Manual Wind Movement, numbered '35941747'  
**Strap:** After-Market Brown Strap  
**Inner Circumference:** Approximately 15.0cm - 18.0cm  
**Buckle:** Signed, Gold-Plated Buckle  
**Box:** No  
**Papers:** No  
**Gross Weight:** 19.8 grams **£200-300**



## Jewellery, Watches, Coins & Silver, 22nd Jun, 2026 18:00

177

### Movado - Dress Watch

**Reference:** M0157127

**Serial:** 21559

**Bezel:** Smooth

**Case Material:** White Base Metal marked '935'

**Case Diameter:** 25mm x 28mm

**Dial:** White, Blued Hands

**Numerals:** Arabic, Minute Track

**Crown:** Fluted

**Movement:** Movado 15-Jewel Manual Wind Movement

**Complication:** Seconds Subsidiary Dial at six o'clock

**Strap:** After-Market Black Strap

**Inner Circumference:** Approximately 15.5cm - 19.5cm

**Buckle:** After-Market Buckle

**Box:** No

**Papers:** No

**Gross Weight:** 26.1 grams **£200-300**



178

### Zenith - Dress Watch

**Reference:** 9303370

**Serial:** 4727680 (To Movement)

**Bezel:** Smooth

**Case Material:** Stainless Steel

**Case Diameter:** 35mm

**Dial:** Cream, Pointed Baton Hands with Luminous Inserts

**Numerals:** Baton, Minute Track

**Crown:** Signed, Fluted

**Movement:** Zenith 20-Jewel Automatic Movement, numbered '4727680'

**Complication:** Date Aperture at three o'clock

**Strap:** After-Market Black Leather Strap

**Inner Circumference:** Approximately 16.5cm - 20.0cm

**Buckle:** After-Market Buckle

**Box:** No

**Papers:** No

**Gross Weight:** 44.6 grams **£200-300**



179

### Omega - Seamaster De Ville

**Bezel:** Smooth

**Case Material:** Stainless Steel

**Case Diameter:** Approximately 22mm

**Dial:** Silvered, Sunburst, Pointed Baton Hands

**Numerals:** Baton

**Crown:** Signed, Fluted

**Movement:** Manual Wind

**Strap:** After-Market Blue Leather Strap

**Inner Circumference:** Approximately 14.75cm - 18.0cm

**Buckle:** After-Market Chrome-Plated Buckle

**Box:** No

**Papers:** No

**Gross Weight:** Approximately 14.0 grams

Please note this watch has not been opened. The movement has not been checked and therefore cannot be guaranteed.

**£200-300**



## Jewellery, Watches, Coins & Silver, 22nd Jun, 2026 18:00

### 180 Universal Geneve - Gold-Plated Dress Watch (No Strap)

**Reference:** 567.103  
**Serial:** 3113117  
**Bezel:** Smooth  
**Case Material:** Gold-Plated  
**Case Diameter:** 34mm  
**Dial:** Gold-Tone, Brushed, Pointed Baton Hands  
**Numerals:** Roman, Minute Track  
**Crown:** Signed, Fluted  
**Movement:** Automatic (Deficient)  
**Complication:** Date Aperture at three o'clock  
**Strap:** Deficient  
**Buckle:** Deficient  
**Box:** No  
**Papers:** No  
**Gross Weight:** 23.4 grams **£300-500**



### 181 J.W. Benson - Dress Watch

**Bezel:** Fluted  
**Case Material:** Yellow Metal Surface Testing as 9ct  
**Case Diameter:** 30mm x 30mm  
**Dial:** White, Skeleton Hands  
**Numerals:** Arabic, Minute Track  
**Crown:** Fluted  
**Movement:** Manual Wind  
**Complication:** Seconds Subsidiary Dial at six o'clock  
**Strap:** After-Market Brown Strap  
**Inner Circumference:** Approximately 16.5cm - 21.0cm  
**Buckle:** After-Market Buckle  
**Box:** No  
**Papers:** No  
**Gross Weight:** 32.3 grams

Please note this watch has not been opened. The movement has not been checked and therefore cannot be guaranteed. Please note: Unless otherwise stated, lots have been tested using an electronic tester. This is a surface test only and is not a guarantee of metal purity. **£400-600**



### 182 Omega - 9ct Gold Dress Watch

**Reference:** 7115685 (Case Back marked internally '1061')  
**Serial:** 34586592 (To Movement)  
**Year:** Hallmarked 1969  
**Bezel:** Smooth  
**Case Material:** 9ct Gold  
**Case Diameter:** Approximately 14mm x 18mm  
**Dial:** Gold-Tone, Brushed, Black Pointed Baton Hands  
**Numerals:** Baton  
**Crown:** Signed, Fluted  
**Movement:** Omega Calibre 485 17-Jewel manual Wind Movement, numbered '34586592'  
**Strap:** Integral Mesh Bracelet  
**Inner Circumference:** Approximately 16.5cm  
**Buckle:** Signed, 9ct Gold Fold-Over Clasp  
**Box:** No  
**Papers:** No  
**Gross Weight:** 25.6 grams **£600-800**



## Jewellery, Watches, Coins & Silver, 22nd Jun, 2026 18:00

- 183 A group lot to include a drink flask by Aspinal, an Asprey wallet, a silver Key-ring, a silver money clip and a Links of London bubble blower. **£50-100**



- 184 A Mont Blanc Meisterstruck fountain pen, with a 14k gold nib and a box, together with a pot of ink. **£80-120**



- 185 A Fyne Poynt gilt propelling pencil by Mabie Todd & Co, plain body engraved to the top with maker's mark; 13.5 grams **£150-250**



- 186 A 9ct gold lighter by A.D Bach of Worcester, decorated with Clous de Paris texture, lighter measures 4.5cm x 3.0cm x 1.1cm, signed to base, 58.5 grams. **£600-800**



- 187 Gucci - a plated cigar box, a plated photo frame, a ceramic tray depicting ducks in a pond, and two packs of playing cards, all signed Gucci. (5) **£100-200**



## Jewellery, Watches, Coins & Silver, 22nd Jun, 2026 18:00

- 188 A 9ct gold retracting pencil (centre section deficient, non-functioning), 11.26 grams; and a white metal retracting pencil (non-functioning), stamped 'sterling silver', 16.5 grams. (Qty: 2) **£150-250**



- 189 An 18ct gold Parker fountain pen and a 9ct gold lighter; The fountain pen (broken) with engine-turned design, featuring cartouche engraved 'BCW', 56.2 grams; The lighter with engine turned design, stamped 'AD' to base, 42.4 grams. (2). **£300-500**



- 190 An Austrian 25 Schilling coin, 5.9 grams. **£400-600**



- 191 A 1930 20 Franc coin, Bern mint, 6.4 grams. **£500-700**



- 192 An Elizabeth II Proof Sovereign, dated 1980, in a presentation case with certificate. This lot is being sold on behalf of Cancer Research UK, with all hammer proceeds going to charity. **£600-800**



## Jewellery, Watches, Coins & Silver, 22nd Jun, 2026 18:00

193 A 1911 George V full sovereign, 8.0 grams. **£600-800**



194 A Queen Victoria 1893 Full Sovereign, Sydney Mint, 8.0 grams. **£650-750**



195 An octagonal Mohur coin, 11.2 grams. **£1,500-2,000**



196 A Royal Mint Gold Proof D-Day Commemorative Fifty Pence coin, 1994, with certificate of authenticity, no. 0020, in capsule and boxed. **£2,000-2,500**



197 A Royal Mint 2013 UK Gold Proof Sovereign Three-Coin Collection, comprising Sovereign, Half-Sovereign, and Quarter-Sovereign, in presentation box with paperwork, numbered 233. **£1,200-1,500**



## Jewellery, Watches, Coins & Silver, 22nd Jun, 2026 18:00

- 198 A Royal Mint 2010 UK Gold Proof Sovereign Three-Coin Collection, comprising Sovereign, Half-Sovereign, and Quarter-Sovereign, in presentation box with paperwork, numbered 349. **£1,200-1,500**



- 199 A collection of three Elizabeth II sovereigns from the portrait collections, to include three full sovereigns dating 1967, potrait by Mary Gillick, 1980, potrait by Arnold Machin and 1991, potrait by Raphael Maklouf, each cased and boxed, with certificate, total weight of coins 24.1 grams (not cased). **£2,000-2,500**



- 200 A Royal Mint 2012 UK Gold Proof Sovereign Premium Three-coin Collection, comprising a double sovereign, sovereign and half sovereign, St George and the Dragon, by Benedetto Pistrucci, number 0337, in presentation box with certificate. **£2,400-2,800**



- 201 A Royal Mint 2004 Brilliant Uncirculated Five Pounds coin, certificate number 0255, with presentation box. **£3,400-3,800**



- 202 A Royal Mint 2003 UK Gold Proof Britannia Four-Coin Collection, comprising 1 Ounce (£100), 1/2 Ounce (£50), 1/4 Ounce (£25) & 1/10 Ounce coins (£10), by Philip Nathan, number 1064. **£5,000-6,000**



## Jewellery, Watches, Coins & Silver, 22nd Jun, 2026 18:00

- 203 A Royal Mint 2005 UK Gold Proof Sovereign Four-Coin Collection, comprising Five Pounds, Double Sovereign, Sovereign and half Sovereign, by Timothy Noad, number 1101, in presentation box with certificate. **£6,000-7,000**



- 204 A Limited Edition 2022 Queen Elizabeth II Tribute Gold Sovereign Set, issued by Hattons of London, comprising a One-Eighth Sovereign, Quarter Sovereign, Half Sovereign, Sovereign, Double Sovereign and Five Pounds, with certificate of authenticity, presentation case (numbered 43 of 299) and associated items. **£6,000-8,000**



- 205 A cased set of 1908 Edward VIII Maundy money, and an additional George V 1912 coin. **£50-100**



- 206 A collection of George VI one and two shilling coins, to include forty-four George VI one shilling coins, thirteen George V on shilling coins and twenty George VI two shilling coins, total weight **£100-200**



- 207 A mixed group lot of coins to include Florins, half crowns three pence pieces and other mixed coins. **£100-200**



## Jewellery, Watches, Coins & Silver, 22nd Jun, 2026 18:00

- 208 A collection of various coins to include Israeli commemorative coins and a Churchill coin **£100-200**



- 209 A collection of silver commemorative coins and medals; mostly encapsulated and cased; to include two 5 dinars commemorating the 20th anniversary National day of Kuwait; a 2 dinar for the 15th anniversary; three Elizabeth II Silver Jubilee commemorative silver crowns; a silver proof commemorating the marriage of Prince of Wales and Diana Spencer; a Britannia silver medal by Moscow Narodny Bank commemorating the 50th anniversary of the East-West Trade Bank in the City of London; a British Columbia salish dollar; a 1972 silver London Stock Exchange medal engraved with recipient name; and a Victorian double florin. **£150-250**



- 210 A Royal Mint Queen Elizabeth II 2003 Anniversary Silver Proof Set, comprising Coronation Crown and Jubilee Crown, together with a five-coin Silver Proof 'Bridge Series' set, each coin 9.5g, with certificates. (Qty: 2) **£150-250**



- 211 A Royal Mint 2012 Proof Quarter Sovereign, in presentation box with certificate, numbered 236. **£200-300**



## Jewellery, Watches, Coins & Silver, 22nd Jun, 2026 18:00

- 212 A group of medals for the Order of St John of Jerusalem, awarded to Major-General Peter Raymond Leuchars, CBE, Chief Commander of St John Ambulance (1980 - 1989); including silver gilt and enamel curved breast star (85mm wide) and curved neck badge (73mm wide) with 1.5 inch ribbon, Toye, Kenning & Spencer, Birmingham, 1989, cased; a white metal and enamel curved breast star (75mm wide), neck badge (53mm wide no ribbon)) and lapel badge, cased; another white metal and enamel neck badge (53mm wide) with 1.5 inch ribbon, miniature red enamel ribboned lapel badge and ribbon bar.



After leaving the Army in 1976 Major-General Peter Leuchars was admitted to the Order of St John of Jerusalem as a Commander in 1977, promoted to Knight of Justice in 1978 and finally to Bailiff Grand Cross in 1989, when he retired as Chief Commander in 1989.

Major General Peter Leuchars: commander of St John Ambulance

From the estate of the late Honourable Gillian W. Leuchars  
**£300-500**

- 213 A mixed collection of silver plated items, comprising a boxed set of silver plated flatware, a boxed set of knives, silver plated table spoons, apostle spoons and other items. **£50-100**



- 214 A pair of silver-plated chocolate pots, of baluster form with fluted bellies, one treen handle damaged. (2) **£50-80**



- 215 A large quantity of mixed silver plate, including canteens, goblets, a cocktail shaker and other plated wares. **£100-200**



## Jewellery, Watches, Coins & Silver, 22nd Jun, 2026 18:00

- 216 A set of Christofle silver-plated serving spoons, and other mixed plated flatware, together with a silver condiment spoon, 3.4 grams. **£100-150**



- 217 A collection of silver-plated items; to include a large plated twin-handled tureen, three ice buckets, two mounted claret jugs, and a pair of wine coasters, with various maker's including examples by Mappin & Webb and Garrard. **£100-200**



- 218 A large collection of silver-plated items; to include examples large handled trays, a four-piece tea service, bon bon dishes, sugar tongs, cups, and entree dishes. **£100-200**



- 219 Four Mappin & Webb silver-plated salvers, three of circular form on balls and claws feet; and another with piecrust rim. (4) **£500-700**



- 220 A group of silver items, including a boxed set of teaspoons and sugar sifter by Mappin & Webb; a wood-lined cigarette box and an enamelled example, an engine-turned compact, a silver vanity set, and various bon bon dishes, peperettes, mustard pots, napkin rings, spoons and other items of silver and silver plate; weighable 2448.0 grams (78.7ozt). **£1,500-2,000**



## Jewellery, Watches, Coins & Silver, 22nd Jun, 2026 18:00

- 221 A group of silver and silver-plated items, to include a hinged silver bangle, a silver teaspoon by Mappin & Webb, a silver coffee spoon, a Dutch silver souvenir spoon, and various other plated items, total weighable 64.0 grams (2.057ozt). **£50-100**



- 222 A set of six cased George V silver whisky tots, London 1912 by Charles Edwards, each 4.5 cm high, contained in a bespoke case, 93.31 grams (3 ozt.) combined weight. **£60-100**



- 223 A three-piece Britannia silver-mounted dressing table set, comprising two hair brushes and a mirror, London 1929, decorated with engine-turned patterns, with one further mirror with scrolled floral repousse mount. (4) **£60-100**



- 224 A Colonial Indian white metal parasol handle, embossed with a rural scene on a textured ground, no marks, 19.0 cm in length, 83.6 grams (2.68 ozt). **£80-120**



- 225 A George III silver meat skewer, London 1806, by William Eley I & William Fearn, tapered blade with ring finial, 30.5 cm in length, 88.5 grams (2.84 ozt). **£80-120**



## Jewellery, Watches, Coins & Silver, 22nd Jun, 2026 18:00

- 226 Small group of silver items, to include, a cased set of six teaspoons, an ashtray, a serving spoon, two napkin rings and a small clock by Kitney and CO, total weight without clock 214.0 grams, with clock 273.8 grams. **£80-120**



- 227 A set of American 'sterling' silver mounted coasters, by the Webster Company, comprising nine round glass tea coasters, mounted with pierced mounts of scrolling floral design, all stacked in a fitted holder with handle, each coaster measures 7.5 cm in diameter. **£80-120**



- 228 A Tiffany & Co. 'sterling' ovoid tea infuser, with chain and a suspension loop to the side, engraved with initials and signed 'Tiffany & Co. M Sterling', 49.7 grams; together with a Victorian gilt metal mounted double-ended smelling salt/scent flask combination with a slab cut cylindrical ruby glass body, each fitting with an entwined monogram, signed 'Luchars', length 12.5 cm. (2) **£100-200**



- 229 A Singapore Airlines 'Wonders of the World' silver bar depicting the Grand Canyon Arizona of the U.S.A, marked 400 grains, and 0.800 fine silver, 25.5 grams. **£100-200**



- 230 A late Victorian silver patience card box (104 cards present), Edinburgh 1898, by Brook & Sons, Chester marks 1898 to the interior, with chased flowers and scrolls to the hinged domed top and body together, 78.1 grams, 2.5 ozt (without contents), 8.5 cm high. **£100-200**



## Jewellery, Watches, Coins & Silver, 22nd Jun, 2026 18:00

- 231 An Indian (?) scroll document holder with wooden stands, of cylindrical form with one end detachable, pierced and chased with floral scrolls, white metal stamped '800', 20.0 cm in length, 116.0 grams (3.72 oz). **£100-200**



- 232 Asprey - A silver matchbox cover and a white metal wine-drip stopper, signed, together with two further matchbox covers with hallmarks for "H.D. Sheffield, housing Asprey branded matchboxes, 90.0 grams. **£100-200**



- 233 A Russian 19th-century silver gilt and niello spoon; fiddle pattern with scroll and foliate niello work to the reverse of the bowl and the terminals, Moscow BC 1862, 84 zolotnik; assay mark BC for Victor Vasilyevich Savinsky maker's mark of Andrei Vilbgelmovich Bekman; together, a silver and niello teaspoon, Moscow 1880 and one Russian further niello spoon, a Victorian fiddle pattern tablespoon, Exeter and a coin-set toddy ladle. Gross weight weighable 130 grams, 4.1ozt **£100-200**



- 234 A group of silver, to include, a pair of silver table salt stands (lacking liners), together with two glass sugar sifters, silver mounted, total weighable 249.7 grams (8.0 oz). **£100-150**



- 235 A set of four bird silver placeholders, by the Adie Brothes, Birmingham 1929, of circular form with pierced motifs of birds of different species, in fitted case, total weight of items 102.1 grams (3.28 oz). **£100-200**



## Jewellery, Watches, Coins & Silver, 22nd Jun, 2026 18:00

- 236 A matched silver cruet set, with various makers and dates, to include a Garrard salt cellar and a Garrard mustard pot, on paw feet with lion head finials, a matched pepperette in similar design, and two condiment spoons, in a fitted case signed Garrard, total weighable 393.5 grams (12.65 oz). **£100-200**



- 237 A decorative Iraqi niello box, featuring a traditional river scene, with a building scene to the top and people on boats to the side, bearing no marks, measuring approximately 8.0cm x 5.5cm x 2.5cm, weight 167.2 grams. **£100-200**



- 238 A cased set of six Edwardian silver wine tasters, London 1907 by Wakeley & Wheeler, each 8 cm wide with pierced handle, contained in a bespoke case, 217.7grams (7 oz.) combined weight. **£120-180**



- 239 A William IV silver stilton scoop with mother-of-pearl handle, London 1834 by A B Savory & Sons, 25.0 cm in length, gross weight 115.0 grams (3.69 oz). **£120-180**



- 240 An Arts and Crafts silver cream jug, London 1914, by Greenwood & Watts, of baluster form with a reeded girdle and planished panels, with shaped lip, reeded handle and a flared foot, 133.8 grams (4.30 oz). **£140-180**



## Jewellery, Watches, Coins & Silver, 22nd Jun, 2026 18:00

- 241 A miscellaneous collection of items; to include two pressed amber cheroot holders with 9ct gold mounts, both in fitted silver cases with suspension loops; another cigarette holder with bark-effect texture stamped '925'; a miniature twin-handled trophy cup, a closed bangle and a pill box; together with a glass scent bottle with guilloche enamel cap, and a large silver-plated flask; total weighable 97.0 grams (3.1ozt.). **£150-250**



- 242 A collection of silver-mounted brushes, to include a pair of hairbrushes by Alexander Clark and two other matching clothing brushes. (4) **£150-250**



- 243 Two George III silver mustard pots; the first by Peter & Ann Bateman, London 1798, of oval form with reeded edge and a chair-back thumbpiece on scrolling handle, blue glass fitted liner, 96.5 grams (3.1ozt) weighable; and an urn-shaped mustard pot, possibly by William Abdy II, London 1798, with hinged domed cover, and a stemmed loaded base. (2) **£150-250**



- 244 A pair of silver tapersticks, London 1895-1896, by Goldsmiths & Silversmiths Co (William Gibson & John Lawrence Langman), of George III style, with loaded square bases and baluster columns, one of the detachable sconces is in Britannia standard, 14.5 cm high. **£150-250**



- 245 A compact mirror, lipstick and scent bottle set, all engraved with heart motifs, stamped '925', total weight of items 176.0 grams (5.65 ozt). (3) **£150-250**



## Jewellery, Watches, Coins & Silver, 22nd Jun, 2026 18:00

- 246 A small collection of silver condiment items; to include three salt cellars without glass liners, various dates and makers, two mustard pots, two pepperettes and two miniature pepperettes, two pairs of sugar tongs and various loose condiment spoons; together with a set of four silver-plated dessert forks and a pair of silver-plated tongs; Total weighable 351.5 grams (11.30 ozt). **£200-300**



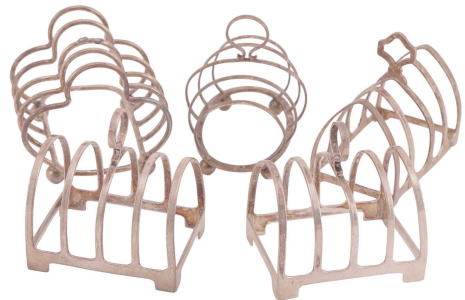
- 247 A Jocelyn Burton silver decorative bowl, set with an oval malachite cabochon to the inside, London 1977; a Dutch .833 silver snuff box; a German .800 silver tea caddy embossed with cherubs; a front-and back locket with three glazed compartments, surface testing as 14ct to the case, central segment in base metal; and other silver-plated sugar caster and scuttle. Total weighable 372.5 grams (11.97 ozt). **£200-300**



- 248 A pair of Victorian silver-mounted 'glug glug' decanters, Birmingham 1897 by Henry Matthews, the glass bottle body mounted with repousse silver shoulders with scrolling foliage, plain neck and petal drip collars, stoppers deficient; and a silver helmet-shaped cream jug, London 1962 by Carrington & Co., with cut-card work to the bottom half of the body, on a domed pedestal foot, 151.0 grams (4.85 ozt). **£200-300**



- 249 Five silver toast racks; to include a pair of Deakin & Francis toast racks, an Adie Brothers example in the form of arches, and two other similar examples, one with handle deficient; total weight of items 243.0 grams (7.81 ozt). (5) **£200-300**



- 250 A boxed silver sugar bowl and cream jug; Birmingham 1983 by E G Ld, with gadrooned rim and twisted rope design handle, total weight of item 241.5 grams (7.76 ozt). **£200-300**



## Jewellery, Watches, Coins & Silver, 22nd Jun, 2026 18:00

- 251 Three cased sets of silver spoons, to include, a set of six teaspoons and sugar tongs, and two similar cased coffee spoons decorated with a 'coffee bean' finial, 296.0 grams (9.51ozt). **£200-300**



- 252 A Vietnamese/Polish silver charger, with a wide scalloped rim embossed with scenes of Vietnam, depicting junk boats, plum trees, pagodas and rice farmers on a crosshatched ground, Polish .875 standard assay marks (1963-1986) to the base, 23.0 cm diameter; a creamer, sugar bowl and tray set in German .925 silver by Bruckmann & Sohne, of polished plain shapes with reeded handles; and a silver-plated bon bon dish; Total weighable 593.0 grams (19.06 ozt). **£200-300**



- 254 Three sets of cased silver teaspoons (some deficient), including a full set of six enamelled coffee spoons, a silver cigarette case, a rolled-gold pen, and a cased set of silver-plated servers, nut-crackers and grape scissors; total weighable 369.5 grams (11.8ozt). **£200-300**



- 255 A pair of twin-handled tazzas, Birmingham 1945, by Mappin & Webb, bowl of panelled design with a pierced foliate border and gadrooned edge, on a stemmed pedestal with conforming spread round bases, 12.0 cm high; total weight of items 353.5 grams (11.36 ozt). (2) **£200-400**



- 256 A large silver sugar caster, a Victorian milk jug with floral engravings, a silver spirit measure; weighable 401.0 grams (12.89 ozt); Together with other silver-plated items such as a pair of crested cheese warmers, a pair of vesta cases and cocktail stir etc. **£200-300**



## Jewellery, Watches, Coins & Silver, 22nd Jun, 2026 18:00

- 257 An Edwardian silver pedestal bowl, Chester 1908 by Martin, Hall & Co, with twin handles and lobed base, 13 cm high x 24 cm wide, 342.1 grams (11 oz). **£200-300**



- 258 A silver pedestal bowl, Sheffield 1959, by Mappin & Webb, of circular form with Chippendale shaped rim decorated with scrolls and shells, on a spreaded foot, 24.0 cm in diameter, 313.5 grams (10.07 oz). **£200-300**



- 259 A cased set of silver Christening fork and spoon, an Indian white metal milk jug and sugar bowl set, a wooden lined table cigar box, a pair of silver pin cushions in the form of Oxford shoes, another silver-mounted pin cushions in the form of a gondola, total weighable 328.5 grams (10.56 oz). **£200-300**



- 260 A Victorian silver milk jug, London 1851, by Daniel & Charles Houle, of baluster form with a cast applied scrollwork rim, body decorated with floral repousse work framing two vacant cartouches, with leaf-capped scroll handle, on four bracket feet, gilt interior, 14.5 cm high, 335.5 grams (10.78 oz). **£200-300**



- 261 An Edwardian silver tazza, Sheffield 1908 by Martin, Hall & Co, with twin scroll handles and pierced border, 18 cm high x 23 cm wide, 398.12 grams (12.8 oz). **£250-350**



## Jewellery, Watches, Coins & Silver, 22nd Jun, 2026 18:00

- 262 A group lot of silver, to include a gadrooned sugar box, a modern bowl, a small dish and boxed commemorative Lion Top spoon, total weighable 421.0 grams (13.5ozt). **£250-350**



- 263 An assorted lot of silver items, to include, two peppers, five napkin rings, a toast rack, a small cup, and others, total weighable, 523.1 grams (16.8ozt) **£300-500**



- 264 Mappin and Webb - a glass decanter with silver top, and a silver-plated salver. (2) **£300-500**



- 265 A collection of white metal items, to include, cake server, two fish knives, seven pepperettes and other broken items. **£300-500**



- 266 A group of assorted small silver items; to include an Art Nouveau silver-mounted notebook, by William Comyns & Sons, London 1904, cover embossed with an iris spray; a trinket dish, a trophy, creamers and salt cellars, a cigarette holder, a table cigar wooden lined case, and a white metal betel box; total weighable 527.5 grams (16.95 ozt). **£300-500**



## Jewellery, Watches, Coins & Silver, 22nd Jun, 2026 18:00

- 267 A silver salver, London 1923, by C S Harris & Sons Ltd, of circular form with Bath rim, centred with a vacant cartouche, supported on three hoof feet, 26.0 cm in diameter, 326.5 grams (10.49 oz). **£300-500**



- 268 A silver-mounted dressing table set, by Henry Matthews, Chester 1915, Birmingham 1916, to include two shaped oval trays and a clothes brush, decorated with vertical stripes and fleur-de-lis patterns, with monogram engraved on round cartouche; together with a matched hair brush, another clothes brush and hair comb; weighable 379.0 grams (12.1ozt). **£300-500**



- 269 A small group of silver items; a pair of Deakin & Francis octagonal panelled pepperettes, Birmingham 1899; a christening cup with striated decorations, Sheffield 1934; and a collection of seven sugar tongs, with various dates and makers, to include a George III exemplified with bright-cut decorations; total weight of items 446.0 grams (14.33 oz). **£300-500**



- 270 A white metal tray of rounded rectangular form, with a gadrooned border with floral motifs to the cardinal points, white metal marked 'Sterling', together with a maker's mark of S within a heart cartouche, 25.0 cm wide, 416.0 grams (13.37 oz). **£300-500**



- 271 Two Continental trinket dishes, the first chased with a town scene, with Dutch .833 silver marks, the other depicting a group of cherubs, German .800 silver marks; together with a quatrefoil dressing table box with gilt interior, cover with repoussework of a floral basket; total weight of items 386.9 grams (12.44ozt). (3) **£300-500**



## Jewellery, Watches, Coins & Silver, 22nd Jun, 2026 18:00

- 272 A silver repoussework dressing table tray, Birmingham 1901 by Henry Mathews, of rectangular form with Rococo-style floral scrollwork design all over, pierced border, and central cartouche engraved with the name 'Amy', 30.5 x 20.5 cm, 304.5 grams (9.78 ozt). **£300-500**



- 273 A group of miscellaneous silver items; to include two cased teaspoon sets, a spill vase, a christening mug and two shell butter dishes on bun feet, total weight of items 385.0 grams (12.37 ozt). **£300-500**



- 274 A group of silver-mounted dressing table items; to include examples of an Arts and Crafts table vanity case, London 1908 by S W Smith & Co., of cylindrical form; a pill box with hinged cover engraved with laurel; an Art Nouveau cranberry glass bottle in a pierced floral silver holder, Birmingham 1901 by William Hutton & Sons Ltd; and other similar items with glass and weighted bases; Total weighable 211.5 grams (6.79 ozt). **£300-500**



- 275 A Continental white metal salver, of circular form on bracket feet, engraved with foliate scrolls and a monogram to the central cartouche, rubbed hallmarks to the base, 22.5 cm in diameter, 422.5 grams (13.5ozt.); together with a silver-plated twin-handled love cup. (2) **£300-500**



- 276 A Victorian silver salver, London 1872 by Thomas Bradbury & Sons, with piecrust edge and engraved decoration, on four ball and claw feet, 25.5 cm diameter, 561.0 grams (18.03 ozt). **£300-500**



## Jewellery, Watches, Coins & Silver, 22nd Jun, 2026 18:00

- 277 A mixed group of Art Nouveau style flatware; to include examples of American 'sterling silver' cocktail spoon and a seafood cocktail fork, an Alvin Manufacturing & Co. large serving spoon, a Gorham butter knife with loaded handle, a set of six table knives with stainless steel blades and Art Nouveau floral repousse handles, a British silver ice cream spoon with mother-of-pearl handle; together with other silver-plated flatware with mother-of-pearl handles; total weighable 175.5 grams (5.64 ozt). **£300-500**



- 278 A collection of small items of silver, comprising a quail (15 cm wide), a set of four table salts, a cigarette case, a napkin ring and five mixed teaspoons, various dates and makers, 497.6 grams (16 ozt.) combined weight. **£350-450**



- 279 An assorted silver-mounted dressing table items; to include three moulded glass bottles with silver caps, a desk trinket case with tortoiseshell cover and loaded base, a footed trinket box and a pair of trinket dishes with pique tortoiseshell decorations, a pair of silver napkin rings and two pill boxes; together with plated asparagus tongs and a pair of pushers; total weighable 100.0 grams. (3.21 ozt) **£100-200**



- 280 A mixed group of various silver money holders/cigarette cases and match stick boxes (5) total weight 426.6 grams (13.69ozt) **£200-300**



- 281 A mixture of silver items, to include, a silver cigarette box with wooden interior, a cream jug, a small bowl and set of eight individual peppers, weight 1005.6 grams. **£400-600**



## Jewellery, Watches, Coins & Silver, 22nd Jun, 2026 18:00

- 282 A mixed collection of cruet and pepperette sets, some with blue glass liners, together with two silver wine coasters, a shoe polishing set, a silver mounted mirror and a silver plate entree dish. **£500-700**



- 283 A mixed group of 'Sterling' flatware; including examples of forks, pickle fork, teaspoons, condiment spoons, seafood cocktail servers etc., by various makers such as Gorham, Hamilton and Diesinger, Tiffany & Co., some Swedish and Russian makers. Total weighable 495.5 grams (15.93 ozt). **£500-700**



- 284 A pair of silver rectangular dishes with pierced foliate border, Sheffield 1898 by Henry Atkin, 17.0 cm wide; an Arts and Crafts bonbon dish, Birmingham 1909, maker's mark rubbed, of octagonal panelled form with pierced geometric patterns, two ribbon handles; and a pedestal bowl, Birmingham 1931 by Israel Sigmund Greenberg, with a pierced border and egg-and-dart edge, supported on a spread round foot, 21.5 cm in diameter; total weight of items 683.5 grams (21.97 ozt). (4) **£500-700**



- 285 A mixed group of silver flatware; to include examples of three Imperial Russian 84 zolotnik forks, Vilno town mark, 1876; three Gorham 'Sterling' spoons; and various examples of English, Swedish, German and American loose flatware, together with silver-plated ladle and a teaspoon. Total weighable 664.5 grams (21.36 ozt). **£600-800**



- 286 A mixed part canteen of Kingsley pattern silver cutlery by James Dixon & Sons Ltd, Sheffield; to include five table forks, mixed dates; eighteen dessert forks, mixed dates, seven fish knives, mixed dates, six dessert spoons, mixed dates, two soup spoons, mixed dates and a serving spoon, 1943; Total weighable 2066.5 grams (66.43 ozt); Together with ten Mappin & Webb stainless steel table knives and thirteen Mappin & Webb stainless steel dessert knives. **£700-900**



## Jewellery, Watches, Coins & Silver, 22nd Jun, 2026 18:00

- 287 A Victorian silver teapot and sugar bowl, Sheffield 1899, by Mappin & Webb, of squat oval form with half fluted body, teapot equipped with hinged dome cover, treen handle and finial, on oval ring foot, 30.0 cm long; sugar bowl in conforming design with angular twin handles, 17.0 cm wide; total weight of items 999.5 grams (32.13 oz). **£700-1,000**



- 288 A large silver tray, by Walkers & Hall, Sheffield 1938, of plain rectangular form with rounded corners, wide rim to the sides as integral handles, 51.0 x 28.5 cm, 1916.0 grams (61.60 oz). **£1,800-2,200**



- 289 Two Longchamp crossbody messenger bags in grained leather, zip closure. (2)  
No dustbag no papers. **£50-100**



- 290 Salvatore Ferragamo - a 'Melinda' tote bag in black calfskin leather, equipped with two leather and chain shoulder straps, multiple zipped compartments, gold-tone hardware. No dustbag no papers. **£50-100**



- 291 A Smythson 'Burlington' messenger bag in brown leather, with dustbag; together with a Tanner Krolle shoulder bag in cream leather with magnetic and drawstring closure. (2) **£50-100**



## Jewellery, Watches, Coins & Silver, 22nd Jun, 2026 18:00

- 292 Five various scarves, to included a box Aspinal scarf depicting white owls, a Turnbull & Asser with hunting scene, two Liberty scarves one with peacock and paisley print, and a green Christian Dior scarf. **£150-250**



- 293 Bottega Veneta - an Interciato Aquilone Fortune shoulder bag in charcoal grey leather, with a top handle, suede lining and zipped compartment. **£200-300**

